

UNIVERSITY THEATRE

TECHNICAL SPECIFICATIONS

University Theatre
University of California Riverside
900 University Avenue
Riverside, CA 92521-0327

2024-2025

Table of Contents

General Information 2

Table of Contents 1

Quick-Change Area 4

Laundry Room 4

Other Useable Spaces 6

Soft Goods 7

Lighting System 9

Audio/Video System 11

Policies 13

University Theatre Contacts 13

General Information

This document is intended to provide answers for prospective visitors to the most common questions concerning the technical aspects and capabilities of our theatre.

The University Theatre was completed in 1963 and is the largest formal performing arts venue on the University of California, Riverside campus. This proscenium-style theatre is equipped with audio, video and lighting gear, (40) line sets (including (4) motorized electrics), dressing rooms, a laundry room, and easy access to the loading dock.

We are the academic and event support unit within the College of Humanities, Arts, and Social Sciences (CHASS) and provide technical support services such as production management, lighting design, audio/visual support, house management, artistic consultation, and ticketing (through the Fine Arts Ticketing Office).

At A Glance

Proscenium Style Theatre

483 Audience Seats

Largest formal performing arts venue at UCR.

Equipped with modern Audio, Lighting, Projections technology.

Large stage performance area

32'w x 32'd x 20'h (upstage of proscenium)

32'w x 14'd x 20'h (Apron downstage of proscenium)

Plenty of dressing room area for large groups.

Laundry and costume room.

Easy access to large loading dock

Equipped to support a wide variety of events.

Provides Management, Design and Technical support services.

- Production Management

- Lighting Design

- Audio

- House Management

- Ticketing (Through the Fine-Arts ticketing office)

Comprised of professional and student staff.

- 2 full-time professional theatre technicians

- 1 full-time business administrator/Ticket office manager

- 30+ part-time student employees

Ability to source local specialist to fulfill all types of event needs

Stage Dimensions

width = w; height = h; depth = d;

Proscenium

32'0" w x 20'0" h

Stage

Plaster Line to Back Wall: 32'0" d

Apron to Back Wall: 46'9" d

Apron (Downstage of Proscenium): 14'9" d (centerline); 13'0" d (SL/SR); 49'2" w

Stage Floor to Grid: 60'0" h

Wing Space Stage Left: 13'0" w

Wing Space Stage Right: 18'0" w

Fly System

(40) line sets; Single-purchase, upright, T-track, counterweight system.

(4) Electrics (included in the (40) line sets) are on single-speed motorized winches controlled from the stage floor on SL

Batten/Electric Length

49'0"

Maximum Height (Battens Only)

47'0" (Lines 1-28); 53'0" (Lines 29-40)

Only qualified and approved operators may use the fly system.

The current rigging system was renovated in 2003 by the Stage Equipment Company of America (SECOA), and was last inspected on July 21, 2023 by Peter Turchyn of PT Rigging Productions Inc.

Fly Loft

Located on Stage Left, 15'0" above the stage floor. Accessible by wall-mounted ladders both upstage and downstage.

Orchestra Pit

The orchestra pit elevator occupies the last 8'0" downstage and is included in the apron dimensions. The elevator can be lowered from stage level to a depth of -7'0" or any depth in between. Controllable by wall panel in the Stage Left Apron Entrance. Requires key. When completely lowered, the pit is accessible through a door in the basement.

Storage

Limited. Discuss storage needs with Theatre Staff for options.

Crossover

Scene Shop directly behind the back wall of the stage.

Stage Dressing & Equipment

(1) 30' AWP-25S Genie Aerial Standard Base Work Platform

Harlequin Dance Floor (custom cut to cover stage and wings upstage of the proscenium arch)
SECOA Maestro Full-Stage Orchestra Shell
Chorale Risers
Yamaha Grand Piano
(60) Black Ensemble Chairs
(60) Music Stands

Facilities

House Seating

Continental, One Floor. *Max Capacity of 460*

Box Office

Technical Booth

Quick-Change Area

A quick-change area can be provided in the Scene Shop behind the stage.

Dressing Rooms

There are (2) large dressing rooms that each have (14) mirrors with make-up lights, (1) full-length mirror, (2) costume racks, (30) lockers, and adjoining restrooms with sinks, toilets, and showers.

The (2) smaller “Star” dressing rooms have private sinks and toilets. They are suitable for up to (3) people in each room at a time.

There is a lounge available between our dressing rooms for performers to utilize before a performance, during intermission, or when not needed on stage level.

Our dressing rooms are located beneath the stage and are accessible by stairways on both stage left and right as well as by elevator on stage left.

Laundry Room

Located near the dressing rooms. We have an ironing board, steam iron, steamer, and a washer and dryer for light laundering and costume touch-ups.

Please supply your own laundry products.

Accessibility

There are (3) wheelchair-accessible areas in our audience seating.

House Left: Row N, Spaces 31 - 38; Row O, Spaces 31 - 38

House Right: Row C, Spaces 2 - 5; Row D, Spaces 1 - 5

House Right: Row N, Spaces 1 - 9; Row O, Spaces 2 - 7

There are (2) elevators in the University Theatre

(1) Main Lobby Elevator provides access to the upstairs restrooms

(1) Lower Lobby Elevator, which is accessible by ramp, provides access from the lower lobby to the stage level as well as the basement/dressing rooms.

In addition to the restrooms upstairs accessible by elevator, there are restrooms in the lower lobby accessible by ramp.

Load In

Load-In takes place at stage level from the loading dock through (2) sets of double doors. The double doors are at right angles to each other upstage right. There is minimal “push” to get gear onstage.

Doors: 13' h x 3'9" w each, 7'6" total

Other Useable Spaces

Production Room

Guest office space may be available upon request.

Green Room

Located in the stage left hallway, directly across from the apron entrance. This room has a fridge, microwave, and sink area. There is also a table and several folding chairs.

You are required to clean up any mess in this area. If any additional cleaning is needed you will be charged accordingly

Outdoor Patio Area

Connects to both the Green Room and Lower Lobby and can serve different purposes depending on production needs.

Soft Goods

Main Curtain *Located Permanently on Line 1. Can Fly or Draw*

- (1) Steel Blue Act Curtain @ 16'0" w x 23'0" h (Per Panel)
 - 2 Panels - 50% Fullness - 32 oz. Velour – No Lining
 - 2'0" Return on Leading Edges
 - Grommets, Ties, and Traveler Clips on 1'0" Centers on Top
 - Extra Grommet and Clip on Each Edge – 6" Backside
 - Chain Pocket with Chain Sewn In at the Bottom

Legs *Four sets of legs are required to mask properly. Fullness is tied in when hung, so width is variable.*

- (10) Black Legs @ 9'0" w x 25'0" h
 - 2 Panels - Sewn Flat - 25 oz. Velour – No Lining
 - Grommets and Ties on 1'0" Centers on Top
 - Chain Pocket with Chain Sewn In at the Bottom

Borders

- (4) Black Borders @ 49'0" w x 12'0" h
 - 1 Panel – Sewn Flat – 25 oz. Velour- No Lining
 - Grommets and Ties on 1'0" Centers on Top
 - Chain Pocket with Chain Sewn In at the Bottom

Traveler *Permanently hung on Line 15. Will Either Fly or Draw*

- (1) Black Traveler Curtain @ 54'0" w x 25'0" h
 - 2 Panels (27'0" w each) - 50% Fullness - 25 oz. Velour – No Lining
 - 2'0" Return on Leading Edges
 - Grommets, Ties, and Traveler Clips on 1'0" Centers on Top
 - Extra Grommet and Clip on Each Edge – 6" Backside
 - Chain Pocket with Chain Sewn In at the Bottom

Full Stage Blacks

- (1) Black Split Curtain @ 27'0" w x 25'0" h (Per Panel)
 - 2 Panels - 50% Fullness - 25oz. - No Lining
 - 2'0" Return on Leading Edges
 - Grommets, Ties, and Traveler Clips on 1'0" Centers
 - Extra Grommet and Clip on Each Edge – 6" Backside
- (1) Blackout Curtain @ 49'0" w x 25'0" h
 - 1 Panel – Sewn Flat – 25oz. - No Lining
 - Grommets and Ties on 1'0" Centers on Top

Scrim

- (1) Black Sharkstooth Scrim @ 49'0" w x 25'0" h
 - Grommets and Ties on 1'0" Centers on Top
 - 1-½" Pipe Pocket at the Bottom
- (1) White Sharkstooth Scrim @ 40'0" w x 22'0" h
 - Grommets and Ties on 1'0" Centers
 - 1-½" Pipe Pocket at the Bottom

Cyclorama *Permanently Hung On Line 40*

- 49'0" w x 25'0" h
- White Bleached Muslin
- Grommets and Ties on 1'0" Centers on Top
- Grommets on 2'0" Centers Down Sides

1-1/2" Pipe Pocket at the Bottom

Lighting System

Repertory Light Plot

There is a robust repertory light plot provided. Any changes made to the plot must be included in the rental period including the restore back to the repertory plot.

Main Console

(1) ETC Ion XE, 2048 Outputs. Located in the Lighting Booth upstairs at the rear of the house.

(1) ETC Fader Wing, 40 Faders

(2) 24 in. LCD 1080p multi-touch monitor with adapters

(1) Tripp Lite NG8 8-Port 10/100/1000 Mbps Desktop Gigabit

Ethernet Unmanaged Switch - Metal Housing

(1) Linksys EA6350 IEEE 802.11AC Wireless Router

Tech Table available upon request

(2) 24 in. LCD 1080p multi-touch monitor with adapters

(1) ETC Puck Mini-PC Base 1K outputs

(1) Eos Programming Wing

(1) ETC Fader Wing, 40 Faders

Dimmers

SCR Strand Century CD-80 (Installed September 1989)

(291) 2.4 KW Dimmers

(32) 2.4 KW Double Non-Dims

(8) 6.0 KW Dimmers

(7) 2.4 KW Single Non-Dims

Plugging receptacles are NON-NEMA 3-Pole/3-Wire Hubbell B-43 C-8 Twist-Locks.

10A. 600V. A.C. / 20A. 250V. / 125/250V.

Ellipsoidals/Lekos

(26) ETC Series 2 LUSTRs

(133) Source Four Incandescent

(9) Source 4 Zooms, 25-50°

Lens Tubes

(78) Source 4 36°

(55) Source 4 26°

(20) Source 4 19°

(12) Source 4 50°

Pars

(34) Color Source Par LED RGB-L

Fresnels

(12) 6" STRAND Fresnel

(16) 8" STRAND Fresnel

Cyc Lights

(10) Chauvet Ovation LED Cyc Bar

Moving Lights

(4) SolaFrame 1000, Moving Head

Wireless Hardware

(8) Color Source Relays

(2) Show Babies

Onstage Lighting Positions (Line-set Schedule Position)

First Electric (4)

Distance from
Proscenium: 2'10"
Length: 38'0"
(38) Unique Circuits
(47) Connectors

Second Electric (12)

Distance from
Proscenium: 9'0"
Length: 38'0"
(30) Unique Circuits
(39) Connectors

Third Electric (23)

Distance from
Proscenium: 16'0"
Length: 38'0"
(40) Unique Circuits
(60) Connectors

Fourth Electric (33)

Distance from
Proscenium: 23'6"
Length: 38'0"
(40) Unique Circuits
(60) Connectors

Floor Pockets

(6) Pockets with (4) unique circuits each. This includes (3) pockets on either side of the stage.

Booms

(9) 12'0" h Booms available upon request. (13) Bases in total.

Front of House Lighting Positions

Apron Pipe (Dead Hung)

Distance from Proscenium: 3'0"
Height above Stage: 8'0" to 20'0"
Length: 32'0"
(10) Unique Circuits
(10) Connectors

Apron Side Pipes (Dead Hung)

Distance from Proscenium: 3'6"
Height above stage: 8'0" to 20'0"
(4) Unique Circuits per side
(8) Connectors per side

First AP

Distance from Proscenium: 28'0"
Height above Stage: 27'0"
Throw Distance (Pipe to Plaster Line): 39'0"
(24) Unique Circuits
(48) Connectors

Second AP

Distance from Proscenium: 48'0"
Height above Stage: 27'0"
Throw Distance (Pipe to Plaster Line): 55'0"
(7) Unique Circuits
(14) Connectors
(5) extra circuits can be pulled from the first AP as needed

House Box Booms

Distance from Proscenium: 13'0"
Height above stage: 11'0" to 20'0"
(4) Unique Circuits per side
(12) Connectors per side

House Lights

House lights can be controlled from the Unison Control panel located off the stage left apron, as well as through the lighting console in the Booth.

Production Lights

Running/safety lights, tech table lights, and music stand lights available.

Company Switch

Located downstage left in a 5'0" w x 4'0" d alcove.
400 amp/leg, three-phase with neutral and ground, fused disconnect.

Audio/Video System

Mixing Console

(1) Yamaha M7CL-48

Controls are in the audio booth adjacent to the lighting booth up in the rear of the theatre

Speakers

(5) JBL AM4315/95 Main Speakers (bi-amped) L, C, R, SL, SR configuration

(4) Auxiliary JBL SR4735X 3-way Speakers

(2) Twin-Twelve JBL stage foldback monitors (backstage walls left & right)

(4) Electro-Voice FM1202 floor wedge monitors

Amplifiers

(7) Crown Macro-Tech 1200 Stereo (295w/channel)

Wireless Microphones

(8) Shure UXD Wireless Receivers in the G50 Band

(8) Shure Transmitter body packs

(1) House installed two-antennae array

Microphones

(7) Shure Wireless SM-58

(8) Shure SM-58 Dynamic

(4) Shure SM-57 Dynamic

(4) Crown Model 160 PCC mics (floor mics)

(3) Countryman (headset mics and mic packs)

(4) Shure MVL Lavaliers

Assorted stands and booms

Signal Processing Equipment

(2) Ashly GQ231 Graphic Equalizers (Stereo units with discrete controls for left & right)

(1) T.C. Electronic M300 Dual Engine Processor

Projectors

(1) EPSON LCD Projector Model: H609A 100-240 V~ / 50/60Hz / 10.0-4.4A

Projection Screens

(1) 28'w x 15'h

(1) 12'w x 12'h

Communications

~ (8) Wireless RadioCom TR-800 packs

~ (8) Wired PortaCom packs

Policies

To ensure continued operational safety and quality, the University Theatre holds and enforces certain policies, including, but not necessarily limited to:

- Food and drink, excluding bottled water, is not permitted in the theatre, unless it is used on stage as part of the event.
- Fire is never allowed on stage.
- Smoking is not permitted in the building.
- Only trained and authorized persons may operate certain equipment, including our fly system and lift.

University Theatre Contacts

Primary Contact

Steven Leffue
University Theatre Director
steven.leffue@ucr.edu
(240) 481-8421

Additional Contacts

Griffin Deniger
University Theatre Production Specialist
gdeni002@exch.ucr.edu
(949) 290-9971

Isabel Edwards
University Theatre Business Manager
isabel.edwards@ucr.edu
(951) 827-3367

Sam Gore
University Theatre House Manager
sam.gore@ucr.edu
(702) 350-7810

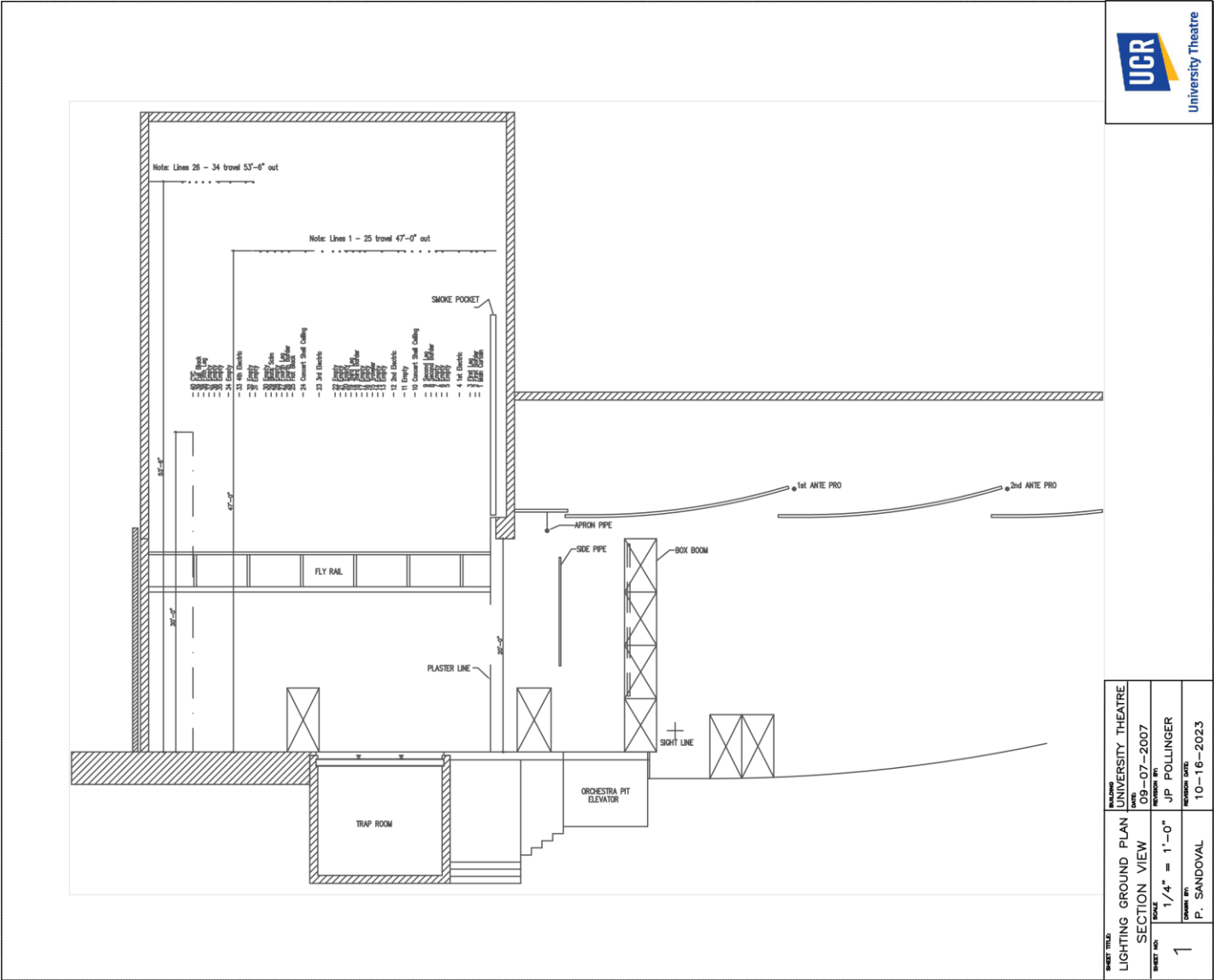
Emergency Contacts

UCPD
(951) 827-5222

Technical Questions?

Please email Griffin Deniger gdeni002@exch.ucr.edu or universitytheatre@ucr.edu with any questions, comments or concerns.

SECTION



SHEET TITLE	UNIVERSITY THEATRE		
	SECTION VIEW		
	SCALE	1/4" = 1'-0"	
	SHEET NO.	1	
DESIGNED BY		P. SANDOVAL	
CHECKED BY		JP POLLINGER	
DATE		10-16-2023	
SHEET SIZE		W=11"	H=8.5"